



**BLEND
FOR BETTER**
LAVAZZA GROUP COMMITMENT



**ZERO CO₂
IMPACT**
ALUMINIUM
CAPSULES

AT THE LAVAZZA GROUP, WE WORK EVERY DAY TO REDUCE OUR CARBON FOOTPRINT.

Aware that not all emissions can be reduced, we have embarked on an offsetting strategy by supporting projects that contribute to sustainable development and to the containment of greenhouse gas emissions.

In 2020, we began our journey by offsetting Scope 1 and 2 emissions, i.e., direct greenhouse gas emissions (due, for example, to the burning of methane for heating) or those deriving from the generation of electricity that is then consumed.

In 2022, we intend to continue this process by offsetting the carbon footprint of Lavazza capsules compatible with Nespresso* Original machines in aluminium. The "ZERO CO2 IMPACT Aluminium Capsules" claim stems from this commitment.

**Lavazza is not affiliated with, endorsed or sponsored by Nespresso*

What does "offsetting" mean?

Offsetting the greenhouse gas emissions generated by a given activity consists of financing projects that absorb an equivalent amount of CO₂. These projects are often reforestation initiatives, but may also relate to energy savings, for example.

Offsetting the greenhouse gas emissions generated makes it possible to declare the products and services involved by this type of activity to be CO₂ neutral.

For 2022 Compatible Capsules

55.258

tonnes of CO₂ eq
were compensated

by supporting the project:

Madre de Dios Amazon

- PERU -

Near the ancient city of Machu Picchu, the construction of an inter-ocean road that links Brazil to Peru threatens the rainforest. To prevent deforestation and save the environment in which the tribal communities and various species risking extinction live, the Madre de Dios Amazon Forest project establishes sustainable forest management practices and seeks to increase surveillance in the area.

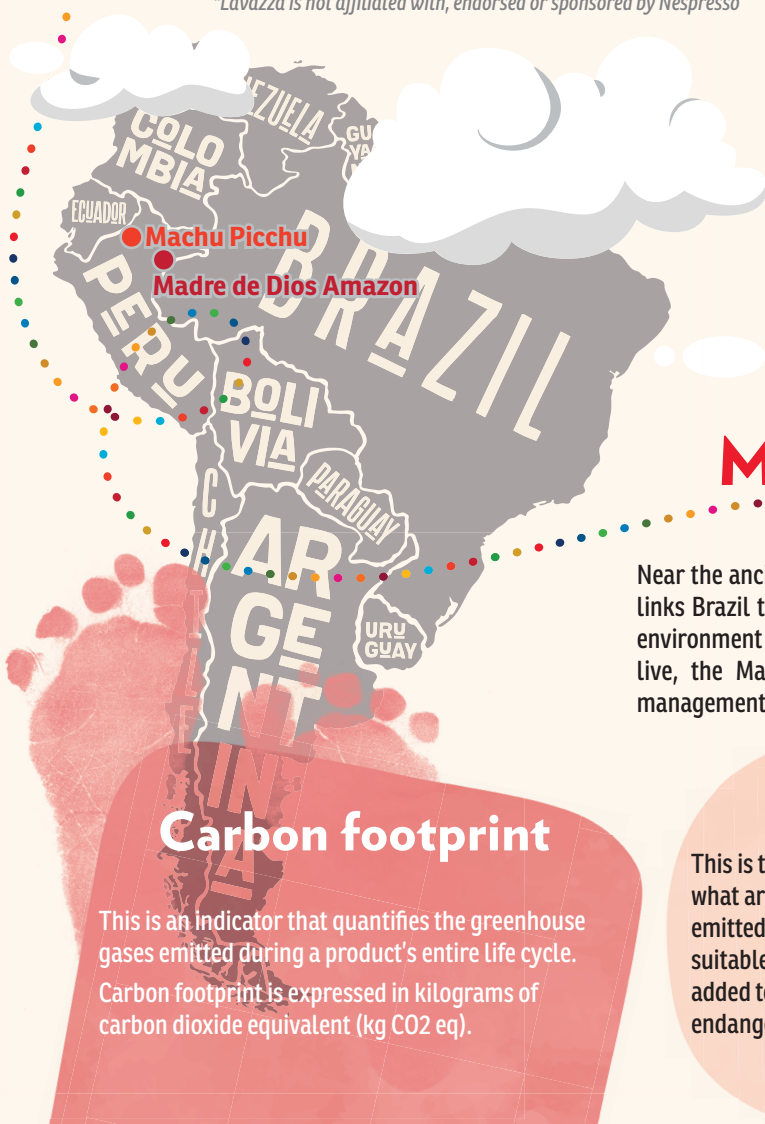
Carbon footprint

This is an indicator that quantifies the greenhouse gases emitted during a product's entire life cycle.

Carbon footprint is expressed in kilograms of carbon dioxide equivalent (kg CO₂ eq).

Greenhouse effect

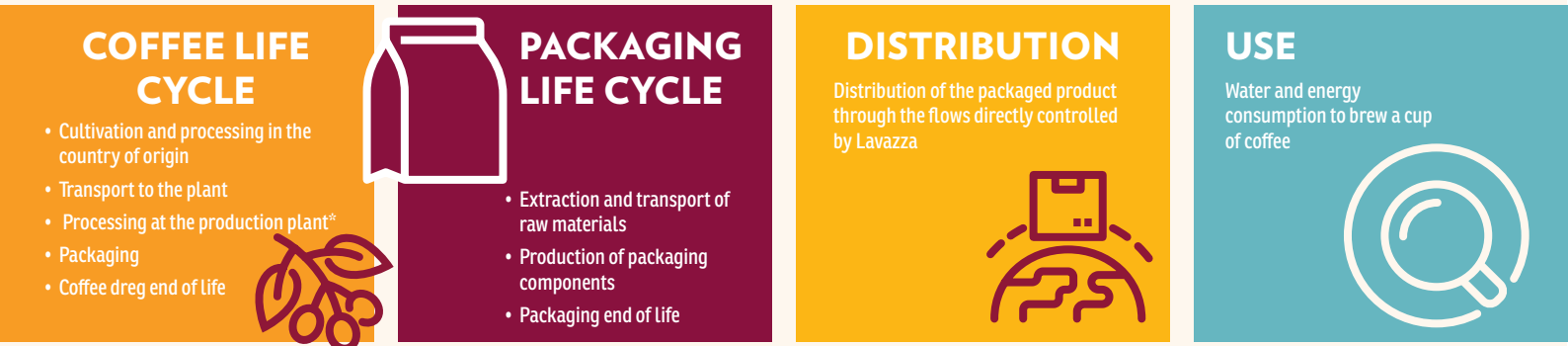
This is the phenomenon caused by the concentration in the atmosphere of what are known as "greenhouses gases", which retain the infra-red radiation emitted by the Earth's surface and atmosphere, allowing our planet to have a suitable temperature for life. The greenhouse effect due to human activity is added to the natural greenhouse effect, further raising the temperature and endangering the balance of the ecosystems and biosphere.



Compatible capsules carbon footprint

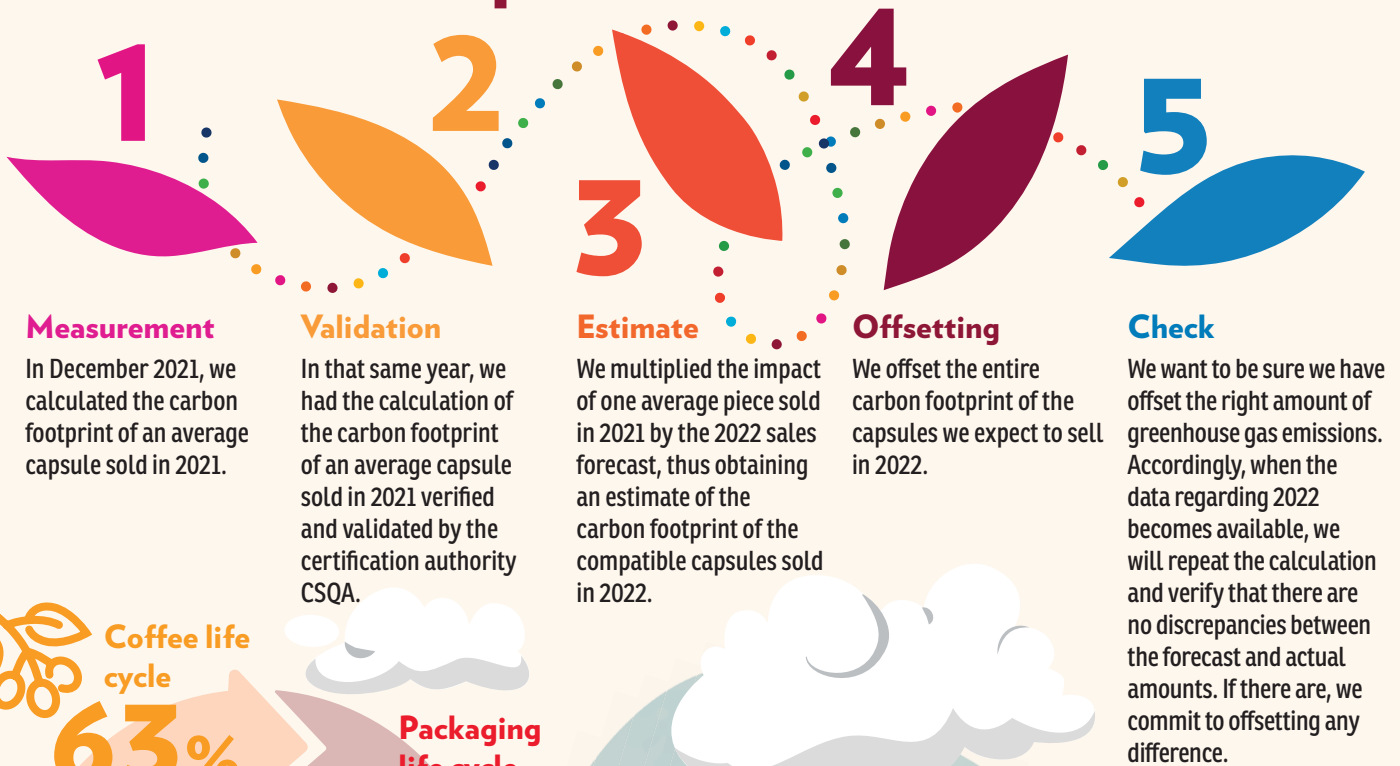
To assess the carbon footprint of the Compatible capsules, we used the LCA (Life Cycle Assessment) methodology and followed the international reference standard on product carbon footprint (ISO 14067).

The LCA methodology analyses a product's environmental impact through all the steps of its life cycle, from raw materials to production, transportation, use and discharge. The life cycle of Compatible capsules includes the phases described in the following scheme:



*All 2021 production is produced by a third-party supplier. Starting in 2022, we will gradually move to producing the capsules internally.

The impact offset for 2022



Coffee life cycle
63%

Packaging life cycle
29%

Carbon footprint
55,258
t CO₂ eq

Use **3%** Distribution **5%**

Reduction activity

Aluminium compatible Lavazza capsules are a new product in the range of Lavazza capsules. In 2021, their first year of production, they were produced by an external supplier. In 2022, Lavazza began a gradual process of internalising production that also involved integrating the production of Compatible capsules, to which emission reduction and process efficiency activities will be applied according to the plans adopted at the corporate level, with the aim of increasing energy efficiency, using renewable energy sources and optimising packaging and the logistics chain.

To learn more read the full report.